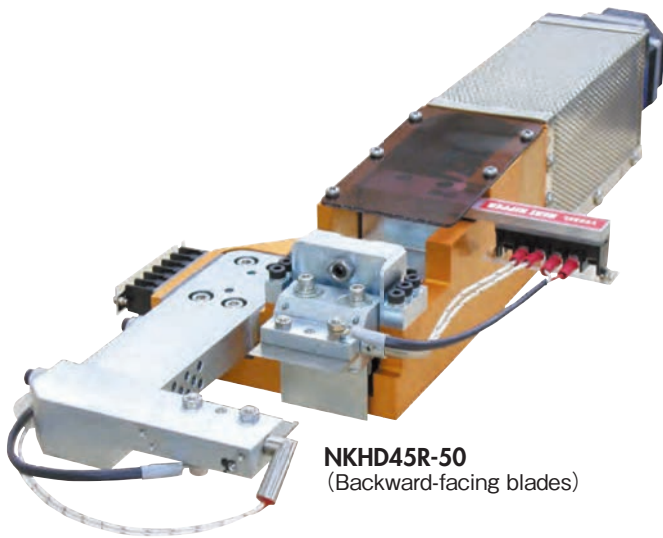
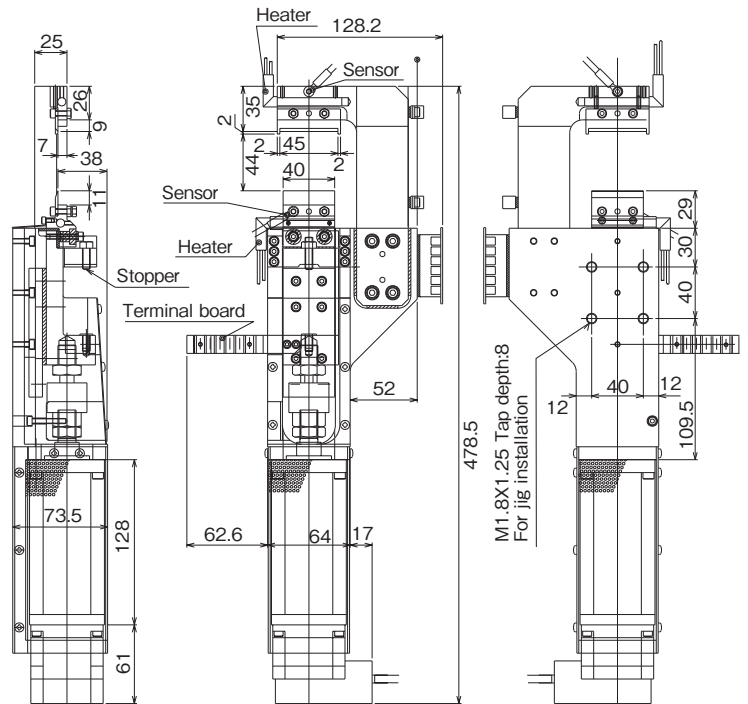


## No. NKHD45R Servo Heat Nippers (With Motor Cylinder)

- Blade travel distance and speed can be easily programmed.
- Servo motor ensures delicate blade feeding and quiet gate cutting.



**NKHD45R-50**  
(Backward-facing blades)



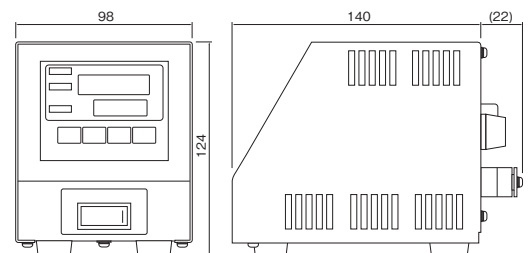
Model No.	Cutting Capacity width x thickness $\phi$ (mm) Acril	Blade Edge Temp. (MAX. °C)	Blade Opening (mm)	Cutting Blade effective (mm)	Max. Thrust (N)	Max. Speed (mm /s)	Positioning Points (pts)	Power Supply Voltage	Current Consumption Power	Control circuit	Weight (kg)	EDP No.
NKHD45R-50	24x1.2	180	46	40	500	100	16	DC24V±10%	3.0A	0.2A	5	—

※A heater for 200V AC and 240V AC respectively can be made-to-order.  
 · Accessory heater: Recommended operating temperature 140°C  
 · Accessory temperature sensor: Recommended operating temperature 140°C

**Option Parts** · Temp. controller (DTC-001) · Power supply · Heater code · Parallel cable · ADP cable · Controller (CTC-33) · Power cord · Sensor cord  
 For the options noted above, contact us because required items or the numbers of them may change depending on the installation method, use details, etc. of servo heat nippers.

## No. DTC-001 Benchtop Temperature Controller

- The heating element can be connected directly to the main unit, a useful feature that saves labor during wiring installation.
- Compact construction enables the unit to be easily carried, allowing for changing the work site at any time.



Please inform us of the model No. of the heat nipper when placing an order.

Model No.	Temperature range Thermocouple K (°C)	Power supply (V)	Power consumption (with 100 VAC input)	Operating ambient temperature/humidity (°C) / (%)	Protection fuse	Weight (g)	EDP No.
DTC-001	0~200	AC100~240	Approx. 3W (Approx. 5VA) (With no load)	0~40 RH35~85% (No condensing)	One 15A fuse is incorporated.	900	—

※Please ensure the input voltage in prior to operation as it is directly connected to the heater.  
 ※Two types of heaters are available for 100V and 240V.

**Option Parts** · Power supply cable : Model No. DTC-001-□-□  
 □ : Cable for connection to the terminal block is necessary to be included. □ : (N/A) Cable not necessary.  
 □ : 2m power cable w/Japanese type plug (A-type) □ : 2m power cable w/European type plug (C-type)  
 □ : (N/A) Cable not necessary.